

Document information

Document: Release notes MapEO

Publication Date: 14/06/2024

Release number: 2024.03

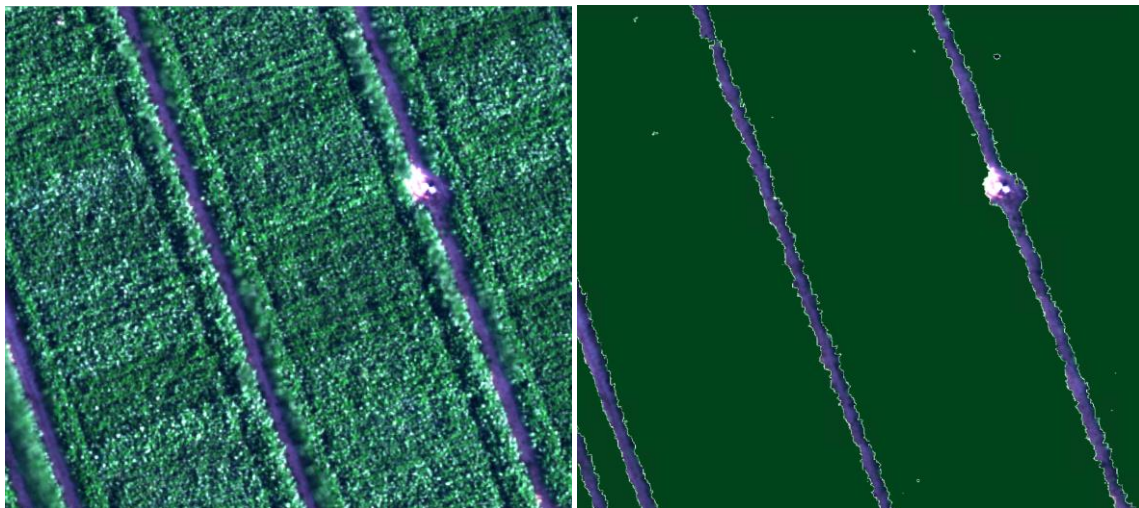
Planned release date: 27/06/2024

Impact release on running operational processes: None

MAPEO Application

2024.03.01: Update crop cover-ms algorithm

With the addition of several new crops and sensors (DJI M3M) added to the platform, we detected several quality issues with the current crop cover algorithm for multispectral sensors (micasense Rededge / dual / altum / DJI M3M). These were corrected for with an updated version of the crop cover algorithm.



2024.03.02: Location filter settings

The location filter settings (application/year/status) are now saved during a user-session such that it's easier to search for specific datasets.



Contact information

<https://support.mapeo.be/>